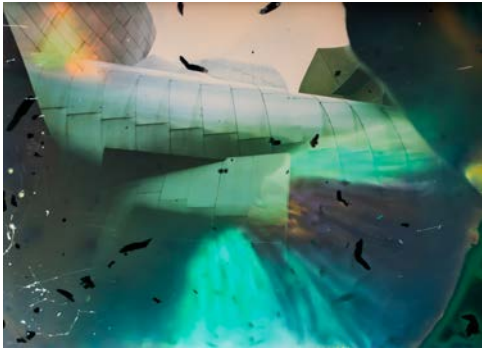


# ART THROUGH THE LENS 2021

## October 2 - November 13



**Ruth Güse & Dorothea Bornemann** Detmold & Kahl, Germany

*Marta Herford (designed by Frank O. Gehry)*

2021

ChromaLuxe 50 x 70 cm – the slide film was soaked in a “film soup” with nightshade vegetation

We are similar in our backgrounds, as we are both designers who worked in the marketing sector. Of course, creativity is also required, creativity that is, however, usually limited by the wishes and expectations of the clients. In artistic photography, we take all the freedom we need. Freedom in dealing with the motifs – natural and architectural landscapes, in the experimental use of technical means, in a combination of photography, cameragrams, double exposures, solarisation. The latter are processes on which light leaves its mark. We work primarily with natural materials, such as plants and earth, taking the risk during the process of creation not to influence a motif completely, but to let chance help shape it. The result is a unique world of images captured with a slide camera on the borderline between photography and painting.